

# Speed™

## Frame Alignment System for light Structural or Cosmetic damage

### Light, but not a lightweight

Speed is one of the most effective lighter weight benches on the market. Packing a 5-ton draw aligner with 2,500 kgs of lifting capacity there isn't much that this bench can't tackle in the way of cosmetic damage repair.

It only takes a few seconds to "snap on" Speed's convenient draw aligner which can be turned 180° around the platform at one end and tilted 90° horizontally. Once pulling begins the draw aligner finds the correct position. For more pulling power there is the Speed Plus bench which allows for the attachment of two draw aligners, one at either end.



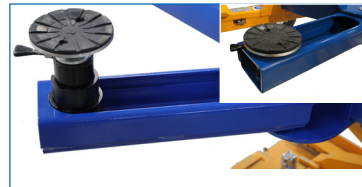
### New and Improved Equipment and Accessories

In our strive to always deliver equipment for safe, efficient and accurate repairs Car-O-Liner has created exciting, new optional equipment to improve the functionality of Speed.

### Features and Benefits

- **Quick set-up time** — drive/roll the car over the lifting platform (4" resting clearance) - increases your workshop capacity
- **"Snap-on" 5-ton draw aligner** — offers 2,500 kgs of lifting capacity and 360° multi-angle pulling - can handle most types of sheet metal damage and cosmetic damage repair
- **Versatile** — the entire job can be completed using just one bench, shortening cycle times and increasing profits
- **Two models** — Speed and the longer Speed Plus gives versatility to your repair shop
- **Small footprint** — makes it the perfect addition to any type of repair/service shop
- **Ergonomic design** — easy to reach damaged areas with nearly two meters maximum lift height
- **Two types of installation** — above- or in-ground provide the versatility to complete both cosmetic damage repairs as well as other light service and repair work

#### 1. TELESCOPIC LIFTING PADS



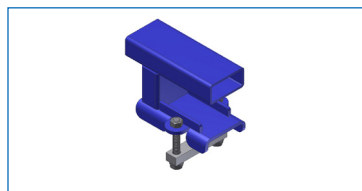
The removable bench arms with telescopic lifting pads (optional) can be adjusted vertically for easy mounting and lifting.

#### 2. SILL LIFT WITH DRIVE-ON RAMPS



Get extra flexibility with the new sill-lift with drive-on ramps - the ramps are easily lifted on/off the bench as desired. (Optional)

#### 3. STRENGTHENED MEASURING EXTENSIONS



Strengthened measuring extensions, B649, give increased performance and safety during pulling

#### 4. IMPROVED RUST PROTECTION



Improved rust protection in the floor mount ensures that your Speed will remain strong and always look as good through years of use.

# Ergonomic Design a Benefit to Technicians

**Speed's scissorlift has such a low profile** that you can drive/roll almost any vehicle over the platform eliminating the need for ramps or external accessories. Moreover, the car can be quickly and easily raised to the most comfortable working height for each repair operation. Speed offers superior vehicle access since no posts are needed. These ergonomic features increase efficiency and offer a productive working environment for the technician.



## Speed Plus

Choose **Speed Plus** for more pulling power. This longer version of Speed allows for the attachment of two draw-aligners to allow for pulling from both ends.



*Speed Plus - for when you need double pulling power*



*Speed's D20 draw aligner gives 5 tons of pulling force.*

## Versatility improves workflow

Speed can handle most types of sheet metal damage, but what makes this bench different from most ordinary alignment benches is that Speed's versatility allows you to complete



almost the entire job on just one bench. All repair and service operations can be performed quickly and effectively using a single set-up. You avoid the unnecessary interruptions that arise when moving the car between different work stations giving you a greatly improved work flow and increasing your overall workshop capacity.

## Technical Data

Lifting Platform	Speed (inc. lift) Art. Nr. 34575	Speed Plus (inc. lift) Art. Nr. 34576
	Speed (no lift) Art. Nr. 35877	Speed Plus (no lift) Art. Nr. 35878
Length/ SPEED	8' 3"	9' 3.5"
Width	2' 6"	2' 6"
Min. height	4"	4"
Max. height	5' 3"	5' 3"
Work area size Speed	11'10" x 9' 9" mm	16' 7" x 9' 9"
Total weight, lift and work platform	1200- 1323 lbs	1200- 1323 lbs
Lift capacity (max. vehicle weight)	5 500 lbs	5 500 lbs
<b>Hydraulics</b>		
Pulling force (per draw aligner)	5 tons	5 tons
Hydraulic pressure on lift	210 bar	210 bar
Air connection pressure	max 10 bar	max 10 bar
Sound level	Below 70 dB(A)	Below 70 dB(A)
Electrical cable length	13'	13'
Hydraulic hose length	23'	23'
Cable to control box	32' 10"	32' 10"
Power	3 Ph, 50 Hz, 200/230/400 V	1 Ph, 60 Hz, 110/220 V

[www.car-o-liner.com](http://www.car-o-liner.com)



# CAR-O-LINER®

CAR-O-LINER is recognized for its leadership in the marketplace by continuously delivering high quality products and exceptional customer service.

Distributor